

CITY OF BEAVER FALLS COMMUNITY DEVELOPMENT

CHARLES JONES
CITY MANAGER

ROCHELLE BURKS
DIRECTOR OF COMMUNITY DEVELOPMENT



THAT WAS THEN

THIS IS NOW

Beaver Falls Downtown Plan

A Community Vision for Downtown

Prepared By:



BEAVER FALLS
PENNSYLVANIA





LIBRARY/MARCH PARK PROJECT



CED

**Beaver County Corporation
for Economic Development**

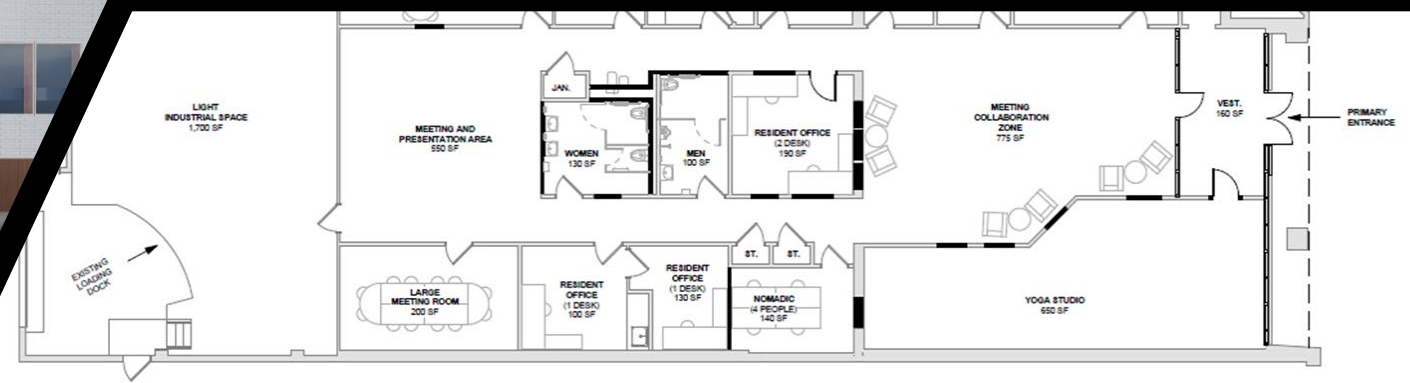




OPTION 2



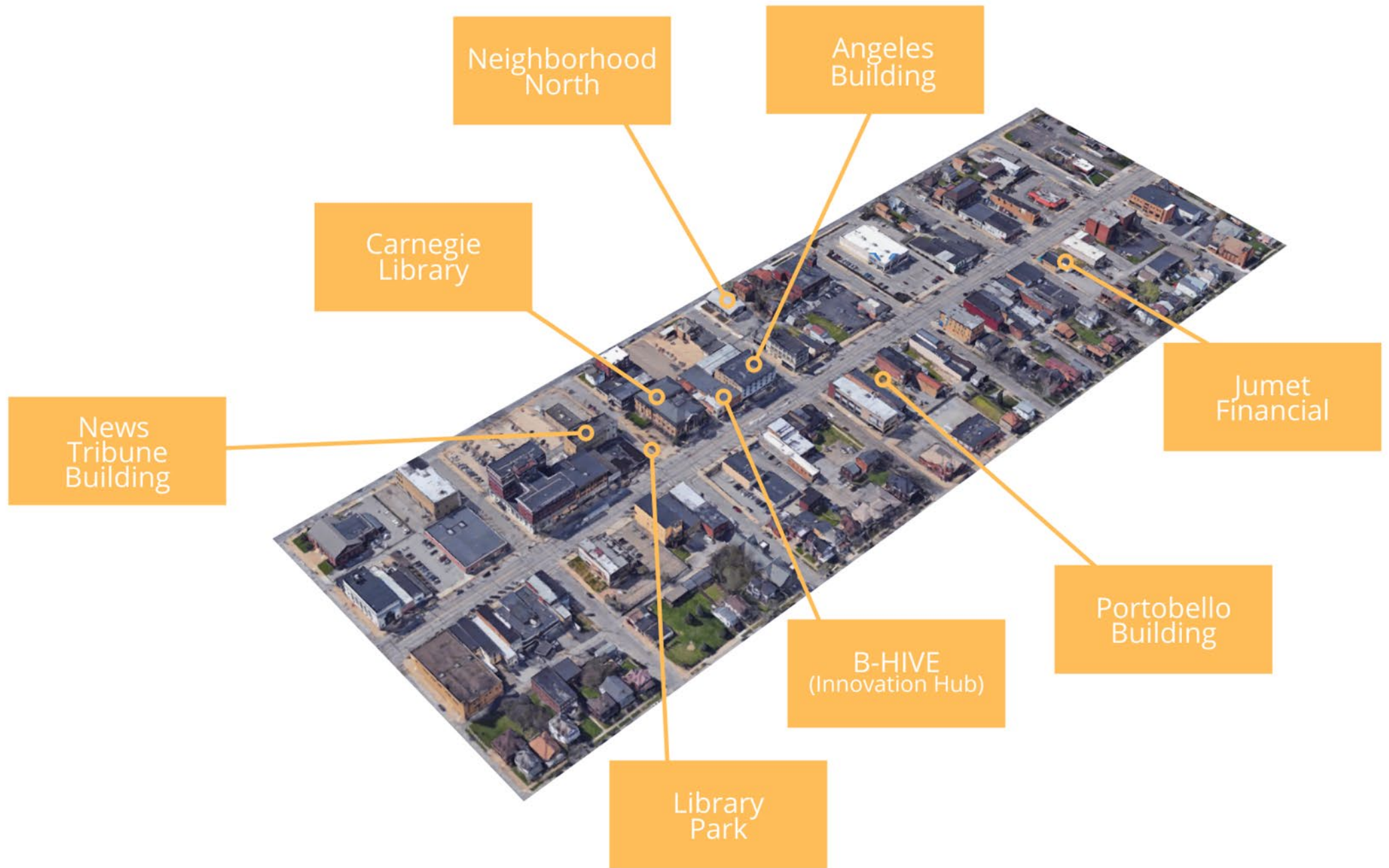
OPTION 3



LEGEND

- = EXISTING WALLS
- = NEW WALL / INFILL EXISTING OPENING

Innovation Corridor





*The Core is a culture and business destination focused on
collaboration and innovation*

beaverfallscore.com



*“You don’t have to
tear down history in
order to have good
things”*

- Brad Frey, Member
of the Trib Working
Team



Neighborhood North Museum of Play proposed conceptual design, image: evolveEA



*Butterfly bench
donated by the
CDC to be
strategically
located in Library
Park*





*2nd Avenue
Playground*

2019





2nd Avenue Playground

2022





 The City of Beaver Falls
Presents the 1st Annual

JUNE TEENTH

2nd Avenue Playground
111 8th St., Beaver Falls, PA, 15010

Free event Saturday, June 18, 2022
3 p.m. - 8 p.m.

FEATURING FREE

LIVE MUSIC ★ KID'S ACTIVITIES ★
VENDORS ★ HEALTH & WELLNESS ★ MORE
+ Food from One-5 BBQ & Steve & Benny's Food Truck



Made with PosterMyWall.com





RUHE PLAYGROUND 2022

Playful Learning & Accessibility



Beaver Falls Car Cruise Second Saturday in June

15,000 Participants and Spectators



Business Support



