



# Building communities that thrive

Jim Price  
Senior Program Manager, Sustainable Pittsburgh  
November 15, 2022



**A joint project that  
assists  
municipalities in  
the Commonwealth  
to improve lives for  
all Pennsylvanians**

# Sustainable communities protect and enhance:

## Environment

Environmental resources and natural landscapes are healthy and resilient.

## Economy

Main streets; business districts; and local job, housing, and real estate markets are vibrant and accessible to all.

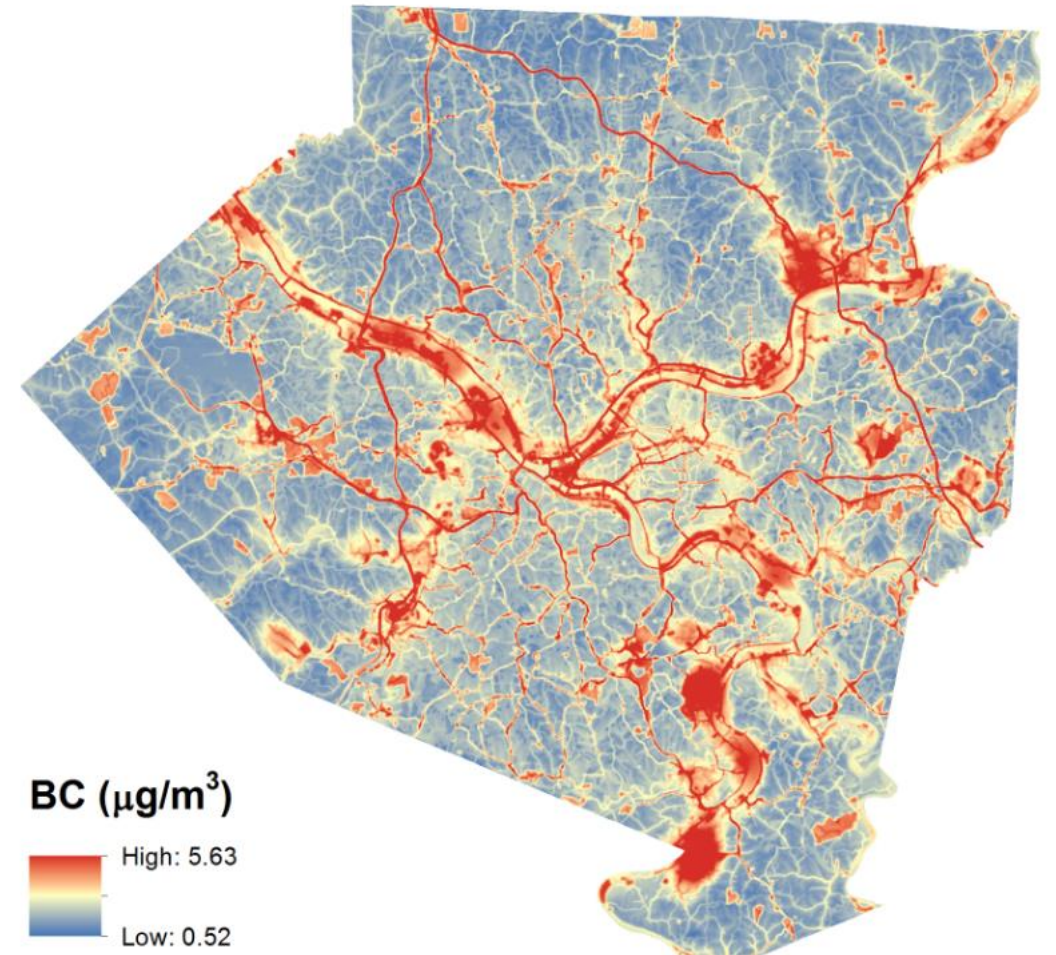
## Equity

Residents are healthy, safe, engaged, and able to meet their needs.



# Solar Energy Projects and Equity

- Promote Clean Air
  - Most vulnerable residents
- Community Solar
  - encourage new law
- Net Metering and Closed Borders
  - Need a AEPS new target
- Promote CPACE



# Combatting Blight and Vacancy

- Code Enforcement
  - Rental inspection program
  - Tests for mold, lead, and/or radon
- Just Cause Ordinance – Philly
- Homelessness Representative or committee that liaisons with services
- Community Rating System
- Flood Zoning
- Support Homeowners Programs
- Housing Trust Fund

- Adaptation
  - Climate Vulnerability
  - ID vulnerable populations
    - Create a registry or use the counties
- Support Renewable Energy and Energy Efficiency
  - CPACE – SolarAPP - Solsmart
- Weatherization program/s
- LIHEAP – Low Income Home Energy Assistance Program



# 13 CLIMATE ACTION



# Infrastructure Investment & Jobs Act and IRA

## JUSTICE 40

- 40% of overall benefits must go to disadvantaged communities
- Any program that makes investments in the following:
  - Climate change
  - Clean energy and energy efficiency
  - Affordable/sustainable housing
  - Training and workforce development
  - Remediation and reduction of legacy pollution
  - Critical Clean water and waste infrastructure

## NEW EJ TOOL

### Explore the map

Public engagement

Use the map to see communities that are identified as disadvantaged. The map uses publicly-available, nationally-consistent datasets. Learn more about the methodology and datasets that were used to identify disadvantaged communities in the current version of the map on the [Methodology & data](#) page.



### • Climate and Economic Justice Screening Tool (CEJST)

- Address - <https://screeningtool.geoplatform.gov/>
- Climate change – direct loss of people, buildings, or agriculture
- Energy – Energy burden, PM2.5, and low income and/or low educational attainment
- Transit – Diesel Particulate matter, vehicle counts
- Housing – Housing cost burden, lead paint
- Legacy Pollution – Hazardous Waste, Superfund Sites, Risk Management Plans
- Clean Water and Wastewater – Wastewater discharge
- Health Burdens – Asthma, Diabetes, Heart Disease
- Workforce development – Linguistic Isolation, LMI, Unemployment, Poverty



# Justice 40 – Focus



- Well paying jobs and job training
- Leverage funds for multiple benefits and to maximize
- Avoid potential burdens
- Ensure transparency
- Conduct outreach and support tech assistance and capacity building efforts
- Provide extra points to projects that meet criteria to benefit disadvantaged communities
- New program guidelines

# Equity and Infrastructure

- Community Planning
  - Assessments – Climate Vulnerability, Transportation, Emergency Response, etc...
  - Engagement Strategy
  - Equity in functional plans
    - Comp Plan
    - Parks and Rec
    - Affordable/Fair Housing (equitable)
  - Reporting and Policy Review.



# SUSTAINABLE PENNSYLVANIA SOCIAL EQUITY SPRINT

- Fun, 3-month competition
- Compete to win by earning points for taking actions that promote social equity in your operations and community
- Launched on November 9, 2022 – Join now!



# SUSTAINABLE PENNSYLVANIA SOCIAL EQUITY SPRINT TOPICS

---

## Planning & Development

- Housing
- Mobility
- Food
- Economic opportunity
- Parks & public spaces
- Identity & Culture
- Planning & Community Engagement

## Public Health & Safety

- Safety
- Health & wellness

## Risk & Resilience

- Emergency preparedness
- Environmental justice
- Just transitions

## Municipal Operations

- Commitment & capacity
- Human resource practices
- Transparency and communications

# Strategic Engagement and Resilience

Effectively fostering community resilience and long term sustainability depends on robust resident, business, and stakeholder participation and buy-in. A community that works together for a healthier, more equitable, and prosperous future will be better prepared for dealing with disaster. This section includes resources for creating a community sustainability team and program, assessing the community's potential shocks and stressors, and creating a resiliency plan.

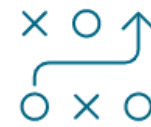


## Sustainability Program

This section focuses on creating, the goals of, and managing a municipal sustainability program. This includes the creation of a...

[Learn More](#)

Resource Pages: [Sustainable Pennsylvania Ecodistricts](#)  
[Sustainability Program](#)



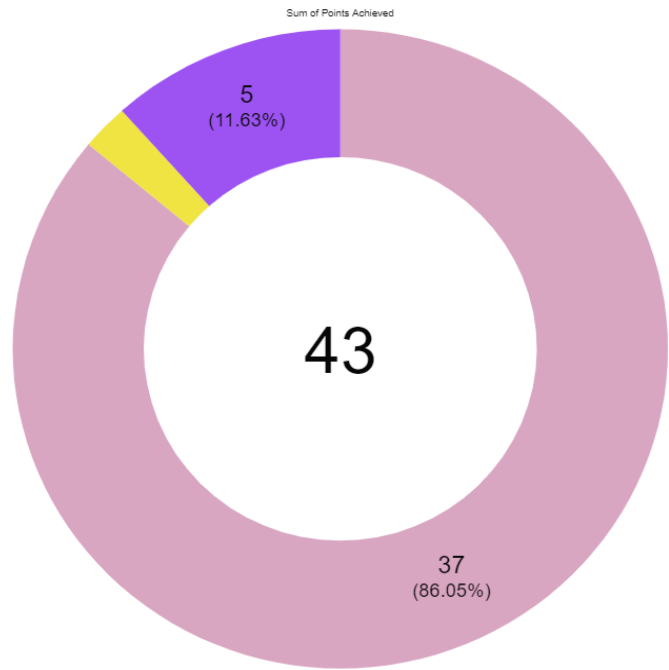
## Resiliency Planning

This section will discuss how to assess shocks and stressors and create and implement a plan to improve community resilience.

[Learn More](#)

Resource Pages: [Resiliency Planning](#)

Points Earned by Topic



- Topic Name
- Sourcing and Sales
  - Social Equity Strategy
  - Remote Working
  - Outreach & Communications
  - On-Ramp
  - On Ramp
  - Employees
  - Diversity, Equity, and Inclusion
  - Diverse & Local Suppliers
  - Community
  - Civic Engagement
  - Business Operations
  - Accessibility

Questions with High Earning Potential

Topic Name ↑	Question: Question Name	Question Text	Answer Text	Points ...	Points...	% of Points...
Accessibility	ADA Accessibility	Is your restaurant ADA accessible?	-	0.00	5.00	0.00%
Accessibility	Walkable Historic/Mixed-use District	The business is located in a historic and/or mixed-use business district that is walkable.	-	0.00	2.00	0.00%
Accessibility	Owner Lives Within 5 Miles	The business is owned by a proprietor who lives within 5 miles of their business.	-	0.00	2.00	0.00%
Accessibility	Bike Rack	The business has a bike rack outside its building for customer and employee use, or covered/indoor bike storage space.	-	0.00	3.00	0.00%
Accessibility	ADA Accessibility	Is your restaurant ADA accessible?	-	0.00	5.00	0.00%
Accessibility	Walkable Historic/Mixed-use District	The business is located in a historic and/or mixed-use business district that is walkable.	-	0.00	2.00	0.00%
Accessibility	Owner Lives Within 5 Miles	The business is owned by a proprietor who lives within 5 miles of their business.	-	0.00	2.00	0.00%
Accessibility	Secure Location to Store Bicycles	Is there a secure location to store bicycles at or near your restaurant?	-	0.00	3.00	0.00%
Accessibility	Bicycle Air Pump/Flat Tire Repair Kit	Do you have a bicycle air pump and flat tire repair kit onsite at your restaurant?	-	0.00	2.00	0.00%
Business Operations	Assessing social equity	In which of the following ways has your business learned about how it affects and is affected by social justice and equity issues? Select all that apply.	C. We have reached out to our stakeholders (e.g., employees, community members, customers, etc.) to learn more about the equity and justice issues that affect or are important to them.	3.00	10.00	30.00%



# NEXT STEPS

- Create an account and find out more at [sustainablepa.org](https://sustainablepa.org)
- Contact us to learn more and get started!



# THANK YOU

If you have any questions, please  
contact:

**LESLIE RHOADS**  
**SUSTAINABILITY COORDINATOR**

**EMAIL**

[lrhoads@pml.org](mailto:lrhoads@pml.org)

**JIM PRICE**  
**SENIOR PROGRAM MANAGER**

**EMAIL**

[jprice@sustainablepittsburgh.org](mailto:jprice@sustainablepittsburgh.org)

